

RAC 050

Auto Coagulation Analyzer



Technical Specifications

System Function

- Throughput: 60 tests/hour for PT
50 tests/hour for PT and APTT
- Parameters: PT, APTT, TT, FIB, AT-III, PLG, D-Dimer, FDP, etc.
- Measuring methods:
 - Clotting: Scattered Light Detection method
 - Chromogenic: Colorimetric method, 405nm
 - Immunologic: Turbidimetric method, 575nm
- Memory: 100,000 test results and 10,000 reaction curves
- Quality control: 12QC File*10 test items*30 curve*, 12month
- Calibration: 6 points*10 items
- Automatic, Random Access
- STAT sample priority
- Auto re-diluent/re-test
- Barcode-reading for sample (optional)
- Bidirectional LIS

Sample Tray

- Sample tray: 27 positions, user-defined STAT
- Incubation temperature: $37 \pm 0.5^\circ\text{C}$

Reagent Tray

- Reagent tray: 23 positions
- Reagent cooling: $\leq 16^\circ\text{C}$

Reaction Tray

- Cuvettes on board : 72
- Min reaction volume: 150ul
- Reaction temperature: $37 \pm 0.5^\circ\text{C}$

Probe

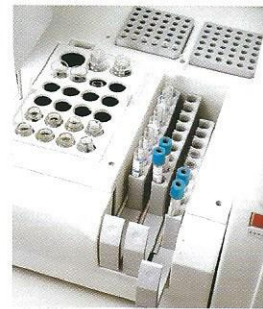
- With probe pre-heating
- Automatic washing both inside and outside
- With collision protection, liquid level detection and inventory checking

Print out

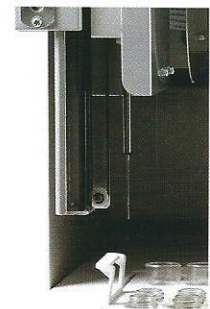
- Built-in thermal printer, external printer optional

Measuring and Optic System

- Light: LED
- Power: AC 110/240V, 50-60 \pm 1Hz
- Temperature: 10 $^\circ\text{C}$ -30 $^\circ\text{C}$, humidity \leq 85%
- Water consumption: <0.5L/hour
- Dimension L*W*H (mm) : 660*580*510
- Weight: 53KG

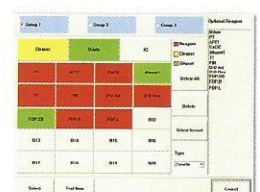
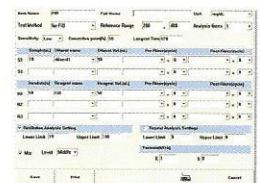
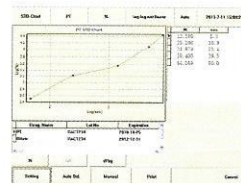


- 7 Detection Channels
- 5 for clotting assays
 - 1 for chromogenic assays
 - 1 for immunologic assays



Sample/Reagent Probe with Liquid Level Detection

Status Menu



Rayto Life and Analytical Sciences Co., Ltd.

2nd Floor, 5th Building, Software Park, NO.2, Gaoxinzhong
3rd Road, High-tech Industrial Park, Nanshan,
Shenzhen 518057, P.R.China
Tel: +86(755)86168996 Fax: +86(755)86168796
Email: info@rayto.com

